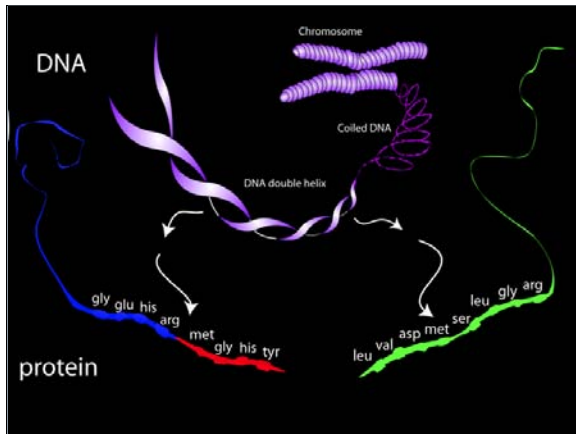
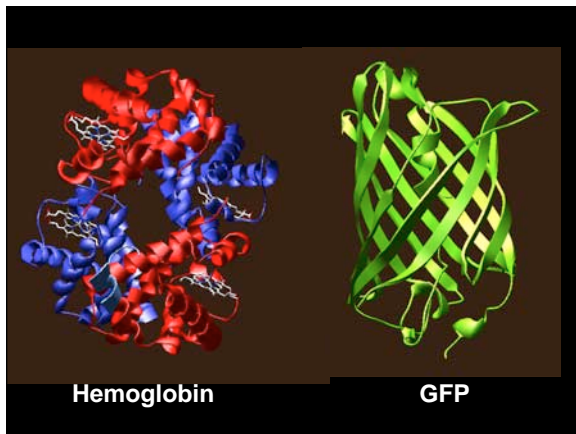


**The Surprising World
of Prion Biology--
A New Mechanism of
Inheritance**

Susan Lindquist, Ph.D.

*Whitehead Institute for Biomedical
Research
Howard Hughes Medical Institute
Department of Biology, MIT*









Problems *and* solutions
are
shared among all
organisms.

Problems and solutions
are
shared among all
organisms.

Complex problem?

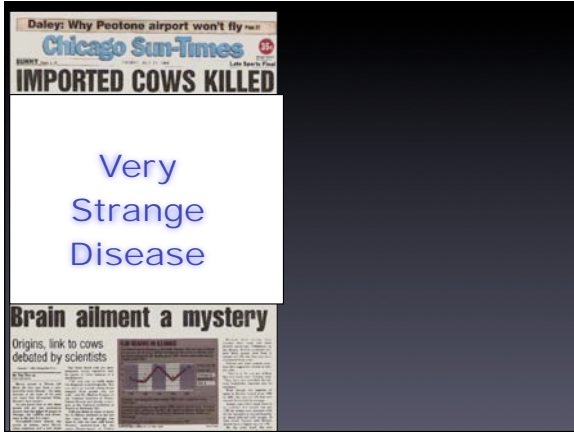
Problems and solutions
are
shared among all
organisms.

Complex problem?

Find the best
place to
start and move
around a lot.

Yeast cells as
living "test tubes"
for complex problems
in protein folding.

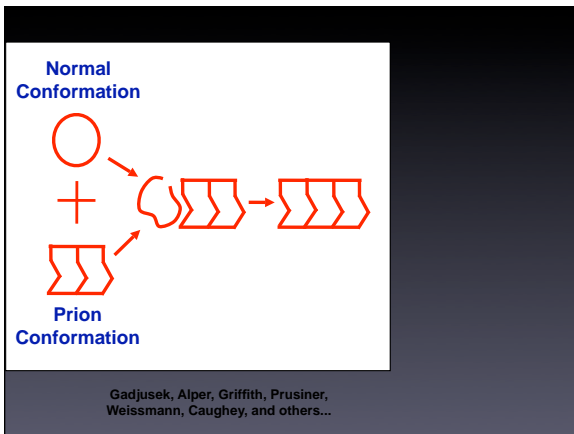




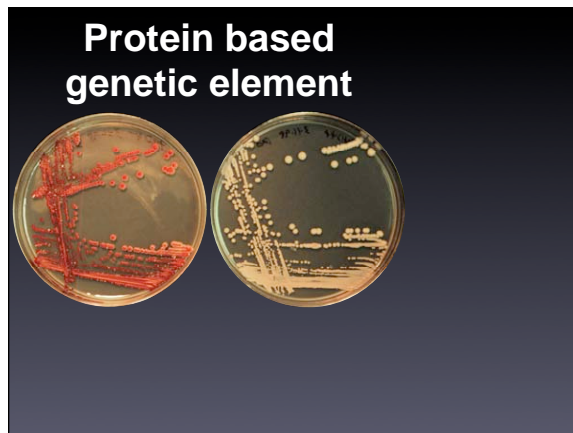
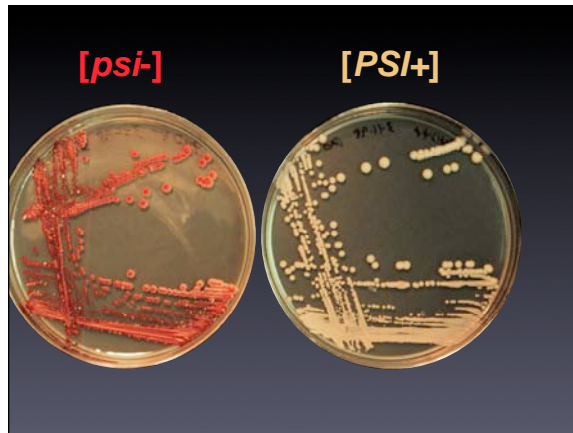
- Infectious
- Heritable
- Spontaneous

Hypothesis: Infectious agent is a protein!?!

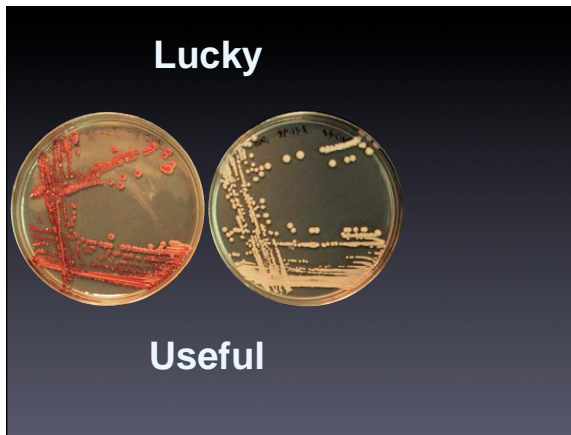
One of our own proteins

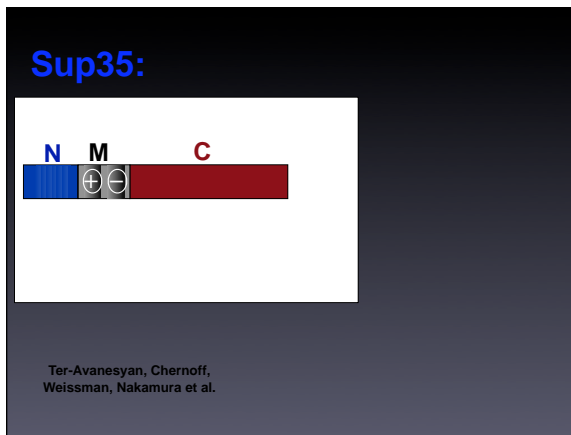


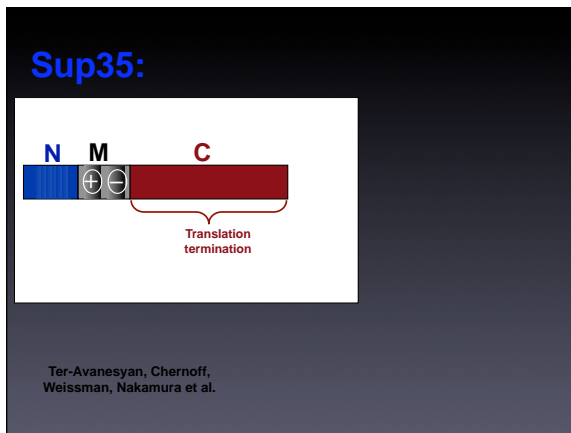
Protein misfolding
is
deeply rooted
in
Biology.



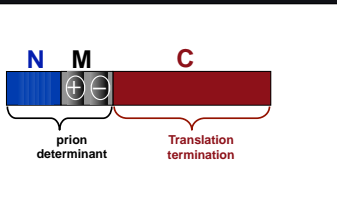
Protein based
genetic element





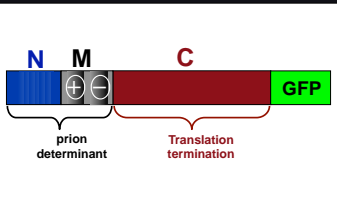


Sup35:



Ter-Avanesyan, Chernoff,
Tuite, Liebman et al.

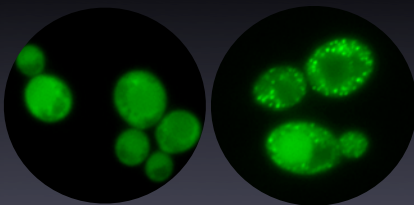
Sup35:

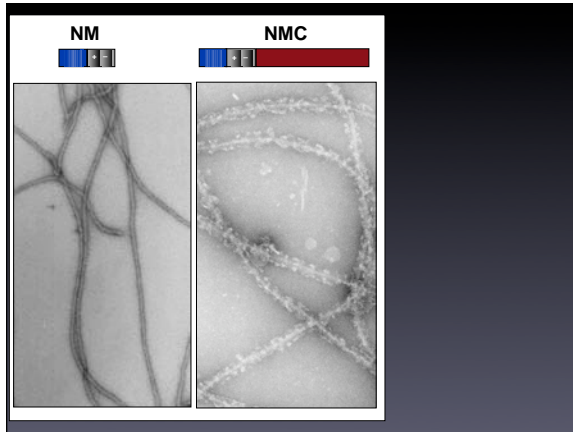


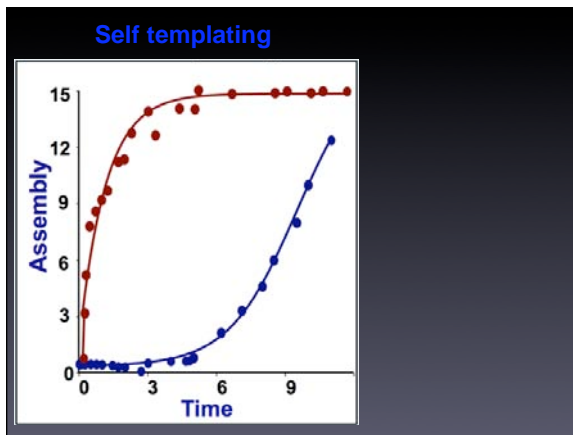
Ter-Avanesyan, Chernoff,
Weissman, Nakamura et al.

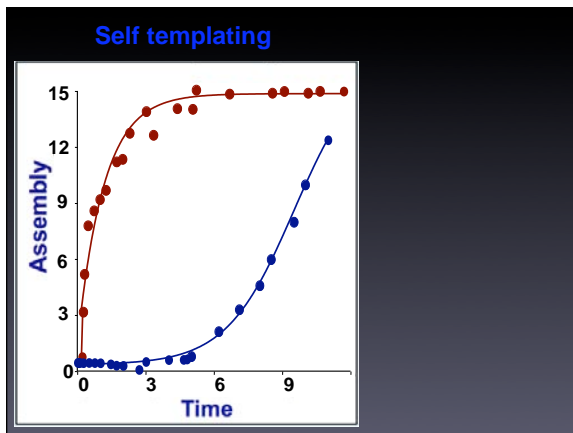
[psi-]

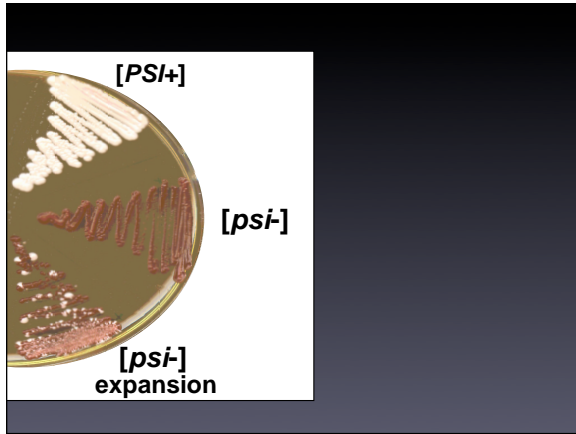
[PSI+]













John Glover Maria Patino JiaJia Liu
